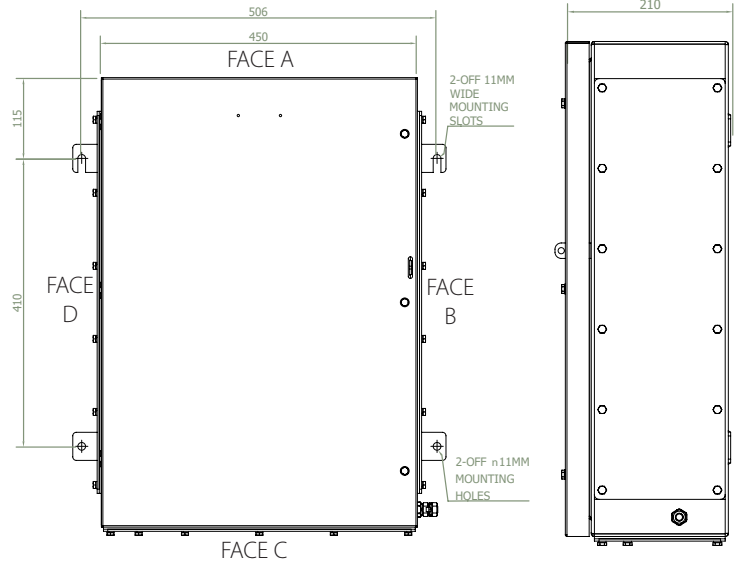
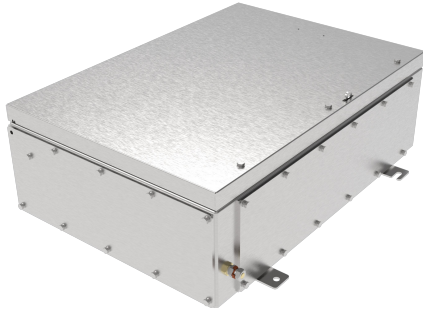




SIZE 6 (S6)

Increased Safety Exe Dual Certified ATEX/ IECEx



The globally certified Hawke S6 Enclosure is designed to withstand some of the world's most arduous environments. With a wide operating temperature range, superior ingress protection and a robust stainless steel construction, the S6 is a safe and reliable Enclosure for use in hazardous areas.

Technical Data

Ingress Protection	IP66 to IEC/EC 60529; Type 4X
Deluge Protection	DTS01
Material	316 Brushed Finish Stainless Steel
Service Temperature	-60°C to +80°C
Temperature Class and Ambient	T6 40°C as standard Optional T5 with ambients up to 65°C For additional options see technical data
Temperature Class and Ambient	T6 40°C as standard Optional T5 with ambients up to 65°C For additional options see technical data
ATEX/IECEx Protection Class	Ex II 2 GD Ex eb IIC Gb; Ex tb IIIC Db
ATEX Certificate No	Baseefa08ATEX0208X (S6) Baseefa08ATEX0207U (ZS6)
IECEx Certificate Number	IECEx BAS 08.0065X (S6) IECEx BAS 08.0064U (ZS6)
UKEX Certificate Number	BAS21UKEX0042X (S6) BAS21UKEX0034U (ZS6)
Construction & Test Standards	IEC/EN 60079-0, IEC/EN 60079-7 and IEC/EN 60079-31
Marine Approvals	ABS: 17-LD1653735-PDA DNV: TAE00003RY Bureau Veritas: 43523/A1 EAC: RU C-GB.HA91.B.00260/21
Additional Certifications	Inmetro: IEx 16.0144X PESO: P457339
CSA	
NEC Protection Class	Class 1 Div 2 ABCD Class I, Zone 1, AEx e IIC Gb Zone 21, AEx tb IIIC T80°C Db
CEC Protection Class	Ex e IIC Gb Ex tb IIIC T80°C Db
c CSA us Certificate	70039997
Construction & Test Standards	UL 50E, UL12.12.01, UL/CSA-C22.2 60079-0, UL/CSA-C22.2 60079-7, UL/CSA-C22.2 60079-31, CSA-C22.2 No. 94-M91, CSA-C22.2 No. 14-M91
UL	
NEC Protection Class	Class I, Zone 1, AEx eb IIC Gb
CEC Protection Class	Ex eb IIC Gb
UL Certificate No	E181955
Construction & Test Standards	UL 50E, UL508, UL/CSA-C22.2 60079-0, UL/CSA-C22.2 60079-7, CSA-C22.2 No. 94.1-15, CSA-C22.2 No. 14.2-15

FEATURES

- Robust Stainless Steel Construction.
- Superior one piece silicone sponge gaskets for excellent ingress and deluge protection.
- Rigid slotted external mounting feet for easy mounting onto structures.
- Stainless steel lid fixing screws with nylon retaining washers to prevent loss of screws during assembly and maintenance.
- Globally Certified.

Terminal Capacity									
Terminal Type	Conductor Size (mm ²)		Max Volts	Rail Orientation	Max. Physical Terminal Content			Reduced Terminal Content at Max Amps	
	Min.	Max.			Terminal Qty	Rail Qty	Amps	Terminal Qty	Amps
WDU 2.5	0.5	2.5	690	V	412	4	3	20	17
					396	6	4		
UT 2.5	0.14	2.5	690	V	408	4	3	27	15
					396	6	4		
WDU 4	0.5	4	690	V	340	4	5	20	22
					324	6	5		
UT 4	0.14	4	690	V	336	4	5	24	20
					324	6	5		
WDU 6	0.5	6	690	V	260	4	7	17	29
					246	6	7		
UT6	0.2	6	690	V	256	4	7	18	28
					240	6	8		
WDU 10	1.5	10	690	V	208	4	10	15	40
					198	6	11		
UT 10	0.5	10	690	V	204	4	11	16	39
					192	6	11		
WDU 16	1.5	16	690	V	168	4	14	13	53
					156	6	15		
UT 16	1.5	16	690	V	168	4	14	13	53
					156	6	15		
WDU 35	2.5	35	690	V	120	4	24	11	80
					108	6	25		
UT 35	1.5	35	690	V	124	4	26	16	70
					114	6	27		
WDU 50N	6	50	690	V	108	4	28	10	88
					32	2	51		
UKH 50	16	50	690	V	100	4	31	12	87
					30	2	57		
WDU 70N	10	70	690	V	48	2	48	6	129
					30	2	61		
WDU 70/95	16	95	1100	V	19	1	89	8	134
UKH 95	25	95	880	V	20	1	92	7	151
WDU 120/150	35	120	1100	V	16	1	123	9	162
WDU 120/150	35	150	1100	V	16	1	132	10	162
UKH 150	50	150	1100	V	16	1	131	8	176
WFF 35/AH	2.5	35	1100	V	38	2	48	15	76
WFF 70/AH	2.5	70	1100	V	16	1	101	12	116
RBO 8-HC	6.0	70	690	V	17	1	92	8	130
WFF 120/AH	6	120	1100	V	12	1	153	10	162
RBO 10-HC	6.0	150	1100	V	12	1	149	5	216
WFF 185/AH	10	185	1100	V	9	1	210	8	215
RBO 12-HC	10.0	240	1100	V	10	1	189	4	290
WFF 300/AH	25	300	1100	V	9	1	253	5	316
RBO 16-HC	25.0	300	1100	V	9	1	253	4	364

* Max terminals are split across the quantity of terminal rails

Maximum Quantity of Entries Per Face								
Thread Size	M16	M20	M25	M32	M40	M50	M63	M75
Face C	44	38	27	14	10	6	4	3
Face B/D	56	48	33	18	13	8	5	4

CAUTION: Entry quantities are calculated based on standard gland diameters. Entry quantity may be affected if using accessories (locknuts, washers etc) with large diameters.